



INSTALLATION AND OPERATION

USER MANUAL

WWW.UNICORE.COM

UM981

BDS/GPS/GLONASS/Galileo/QZSS

All-Constellation Multi-Frequency
RTK/INS Integrated Positioning Module

Revision History

Version	Revision History	Date
R1.0	First release	Sept., 2023
R1.1	Updated Unicare's logo; Updated section 3.3 Power-on and Power-off; Added the placement direction of UM981 in Figure 5-3; Removed information about tilt measurement; Added PPP accuracy in Table 1-1; The CAN interface is supported by specific firmware; Added requirements for the RSV and NC pins; modified pin 35 from RSV to NC.	Sept., 2024
R1.2	Updated 3.5 Recommended Footprint on the PCB . Updated the stencil thickness suggestion in 4 Production Requirements . Added the QZSS L6 frequency and QZSS L6E(MADOCA) PPP service.	Mar., 2025
R1.3	Added a note in 3.5 Recommended Footprint on the PCB . Added a note about the stencil design suggestion in 4 Production Requirements .	Mar., 2025

Legal right notice

This manual provides information and details on the products of Unicare Communication, Inc. ("Unicare") referred to herein.

All rights, title and interest to this document and the information such as data, designs, layouts contained in this manual are fully reserved, including but not limited to the copyrights, patents, trademarks and other proprietary rights as relevant governing laws may grant, and such rights may evolve and be approved, registered or granted from the whole information aforesaid or any part(s) of it or any combination of those parts.

Unicare holds the trademarks of "和芯星通", "UNICORECOMM", "Unicare" and other trade name, trademark, icon, logo, brand name and/or service mark of Unicare products or their product serial referred to in this manual (collectively "Unicare Trademarks").

UM981 User Manual

This manual or any part of it, shall not be deemed as, either expressly, implied, by estoppel or any other form, the granting or transferring of Unicore rights and/or interests (including but not limited to the aforementioned trademark rights), in whole or in part.

Disclaimer

The information contained in this manual is provided "as is" and is believed to be true and correct at the time of its publication or revision. This manual does not represent, and in any case, shall not be construed as a commitments or warranty on the part of Unicore with respect to the fitness for a particular purpose/use, the accuracy, reliability and correctness of the information contained herein.

Information, such as product specifications, descriptions, features and user guide in this manual, are subject to change by Unicore at any time without prior notice, which may not be completely consistent with such information of the specific product you purchase.

Should you purchase our product and encounter any inconsistency, please contact us or our local authorized distributor for the most up-to-date version of this manual along with any addenda or corrigenda.

Foreword

This document describes the hardware information, specifications, packaging and the use of Unicore UM981 modules.

Target Readers

This document is written for technicians who are familiar with GNSS modules.

Contents

1	Introduction	1
1.1	Key Features	2
1.2	Key Specifications	2
1.3	Block Diagram	5
2	Hardware	7
2.1	Pin Definition	7
2.2	Electrical Specifications	11
2.2.1	Absolute Maximum Ratings	11
2.2.2	Operating Conditions	12
2.2.3	IO Threshold	12
2.2.4	Antenna Feature	13
2.3	Dimensions	13
3	Hardware Design	15
3.1	Recommended Minimal Design	15
3.2	Antenna Feed Design	16
3.3	Power-on and Power-off	17
3.4	Grounding and Heat Dissipation	18
3.5	Recommended Footprint on the PCB	19
4	Production Requirements	20
5	Packaging	22
5.1	Label Description	22
5.2	Product Packaging	22

1 Introduction

UM981 is a new generation of GNSS high precision RTK/INS integrated positioning module from Unicore. It supports BDS/GPS/GLONASS/Galileo/QZSS all constellations and can simultaneously track BDS B1I/B2I/B3I/B1C/B2a/B2b, GPS L1/L2/L5, GLONASS G1/G2/G3, Galileo E1/E5a/E5b/E6, QZSS L1/L2/L5/L6, NavIC L5 and SBAS. The module is mainly used in precision agriculture and intelligent driving* applications.

UM981 is based on NebulasIV™, a GNSS SoC which integrates the RF-baseband and high precision algorithm. Besides, the SoC integrates a dual-core CPU, a high speed floating point processor and an RTK co-processor. It is processed with 22 nm low power design and supports 1408 channels, being able to output 100 Hz IMU raw data and up to 50 Hz* RTK positioning result, providing powerful data processing ability.

With the built-in JamShield anti-jamming technology, UM981 has improved the performance of RTK solution for multiple modes and frequencies, ensuring fast RTK initialization speed, high accuracy of measurement and high reliability even in the most challenging environments such as urban canyons and tree shades.

Furthermore, UM981 supports various interfaces such as UART, I²C*, SPI*, as well as 1PPS, EVENT, CAN*, which meets customers' needs in different applications.

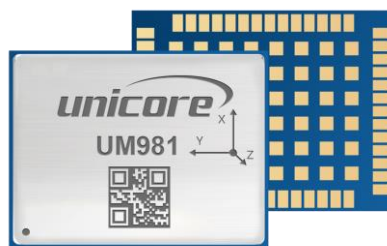


Figure 1-1 UM981 Module

* The application marked with an asterisk is supported by customized model or firmware.

* Data update rate can reach 50 Hz after firmware upgrade.

* I²C and SPI are reserved interfaces, not supported currently. The CAN interface is supported by specific firmware.

1.1 Key Features

- Based on the new generation GNSS SoC - NebulasIV™, which integrates RF-baseband and high precision algorithm
- 17 mm × 22 mm × 2.6 mm, surface-mount device
- Supports all-constellation multi-frequency on-chip RTK positioning solution
- Supports BDS B1I/B2I/B3I/B1C/B2a/B2b + GPS L1/L2/L5 + GLONASS G1/G2/G3 + Galileo E1/E5a/E5b/E6 + QZSS L1/L2/L5/L6 + NavIC L5 + SBAS
- All-constellation multi-frequency RTK engine and advanced RTK processing technology
- Instantaneous RTK initialization technology
- Independent tracking of different frequencies and 60 dB narrowband anti-jamming technology
- 100 Hz IMU raw data output and up to 50 Hz* RTK positioning result output
- Supports B2b-PPP service, E6-HAS and L6E(MADOCA) PPP service

1.2 Key Specifications

Table 1-1 Technical Specifications

Basic Information	
Channels	1408 channels, based on NebulasIV™
Constellations	BDS/GPS/GLONASS/Galileo/QZSS
Frequencies	BDS: B1I, B2I, B3I, B1C, B2a, B2b GPS: L1 C/A, L1C, L2P (Y), L2C, L5 GLONASS: G1, G2, G3 Galileo: E1, E5a, E5b, E6 QZSS: L1C/A, L1C, L2C, L5, L6 NavIC: L5
Power	
Voltage	+3.0 V ~ +3.6 V DC

Power Consumption	480 mW (Typical)			
Performance				
Positioning Accuracy	Single Point Positioning ¹ (RMS)	Horizontal: 1.5 m		
		Vertical: 2.5 m		
	DGPS ^{1,2} (RMS)	Horizontal: 0.4 m		
		Vertical: 0.8 m		
	RTK ^{1,2} (RMS)	Horizontal: 0.8 cm + 1 ppm		
		Vertical: 1.5 cm + 1 ppm		
	PPP ³ (RMS)	Horizontal: 5 cm		
		Vertical: 10 cm		
Attitude Accuracy	Heading	0.3°		
	Roll	0.2°		
	Pitch	0.2°		
Observation Accuracy (RMS)	BDS	GPS	GLONASS	Galileo
B1I/B1C/L1C/L1 C/A/G1/E1 Pseudorange	10 cm	10 cm	10 cm	10 cm
B1I/B1C/L1C/L1 C/A/G1/E1 Carrier Phase	1 mm	1 mm	1 mm	1 mm
B3I/L2P(Y)/L2C/G2/E6 Pseudorange	10 cm	10 cm	10 cm	10 cm
B3I/L2P(Y)/L2C/G2/E6 Carrier Phase	1 mm	1 mm	1 mm	1 mm

¹ Test results may be biased due to atmospheric conditions, baseline length, GNSS antenna type, multipath effect, number of visible satellites, and satellite geometry.

² The measurement uses 1 km baseline and a receiver with good antenna performance, regardless of possible errors of antenna phase center offset.

³ After 20 minutes of convergence under open sky without jamming.

UM981 User Manual

B2I/B2a/B2b/L5/G3/E5a/E5b Pseudorange	10 cm	10 cm	10 cm	10 cm
B2I/B2a/B2b/L5/G3/E5a/E5b Carrier Phase	1 mm	1 mm	1 mm	1 mm
Time Pulse Accuracy (RMS)	20 ns			
Velocity Accuracy ⁴ (RMS)	0.03 m/s			
Time to First Fix ⁵ (TTFF)	Cold Start < 12 s			
	Hot Start < 4 s			
Initialization Time ¹	< 5 s (Typical)			
Initialization Reliability ¹	> 99.9%			
Data Update Rate ⁶	100 Hz IMU raw data output 50 Hz RTK positioning result output			
Differential Data	RTCM 3.X			
Data Format	NMEA-0183, Unicore			
Physical Characteristics				
Package	54 pin LGA			
Dimensions	22 mm × 17 mm × 2.6 mm			
Weight	1.91 g ± 0.03 g			
Environmental Specifications				
Operating Temperature	-40 °C ~ +85 °C			
Storage Temperature	-55 °C ~ +95 °C			
Humidity	95% No condensation			
Vibration	GJB150.16A-2009, MIL-STD-810F			

⁴ Open sky, unobstructed scene, 99% @ static.

⁵ -130dBm @ more than 12 available satellites.

⁶ The 50 Hz data update rate is supported after firmware upgrade.

Shock

GJB150.18A-2009, MIL-STD-810F

Functional Ports

UART × 2

I²C* × 1

SPI* × 1

Slave

CAN* × 1

1.3 Block Diagram

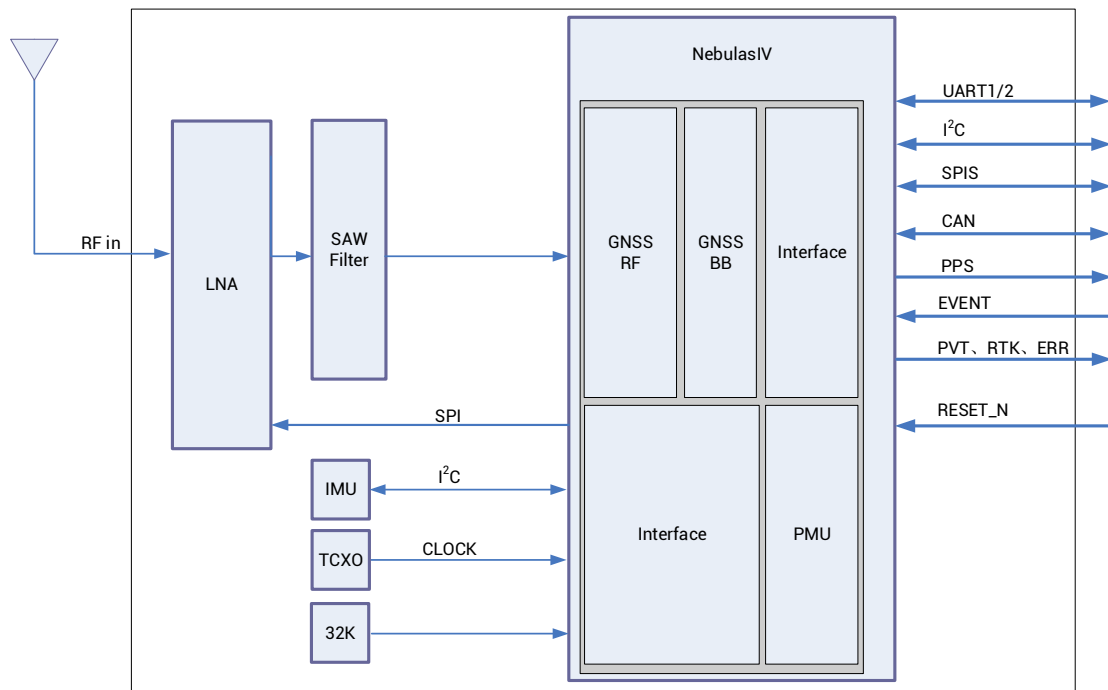


Figure 1-2 UM981 Block Diagram

● RF Part

The receiver gets filtered and enhanced GNSS signal from the antenna via a coaxial cable. The RF part converts the RF input signals into the IF signals, and converts IF analog signals into digital signals required for NebulasIV™ chip (UC9810).

* I²C and SPI are reserved interfaces, not supported currently. The CAN interface is supported by specific firmware.

UM981 User Manual

- **NebulasIV™ SoC (UC9810)**

NebulasIV (UC9810) is Unicore's new generation high precision GNSS SoC with 22 nm low power design, supporting all constellations and all frequencies with 1408 channels. It integrates a dual-core CPU, a high speed floating point processor and an RTK co-processor, which can fulfill the high precision baseband processing and RTK positioning on a single chip.

- **External Interfaces**

The external interfaces of UM981 include UART, I²C*, SPI*, CAN*, PPS, EVENT, RTK_STAT, PVT_STAT, ERR_STAT, RESET_N, etc.

* I²C, SPI, CAN: reserved interfaces, not supported currently.

2 Hardware

2.1 Pin Definition

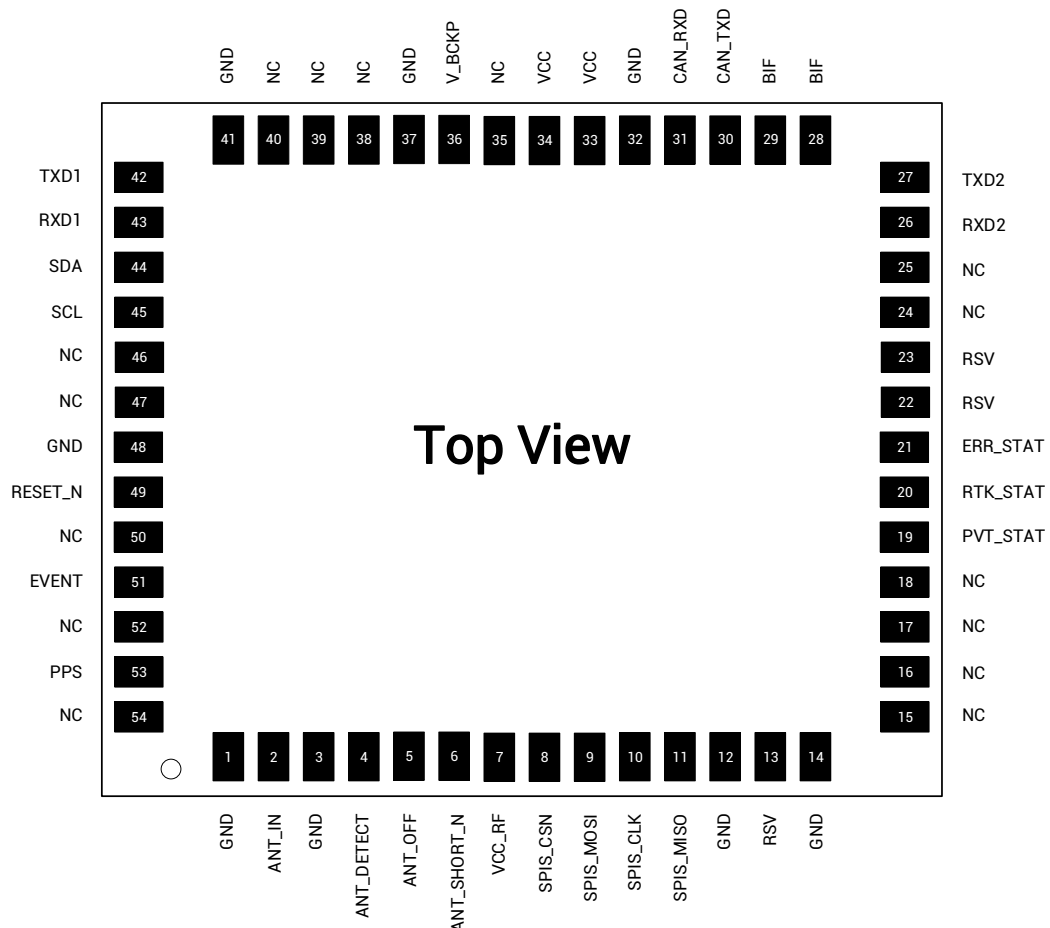


Figure 2-1 UM981 Pin Definition

Table 2-1 Pin Description

No.	Pin	I/O	Description
1	GND	—	Ground
2	ANT_IN	I	GNSS antenna signal input
3	GND	—	Ground
4	ANT_DETECT	I	Antenna signal detection
5	ANT_OFF	O	Disable external LNA

No.	Pin	I/O	Description
6	ANT_SHORT_N	I	Antenna short circuit detection; active low
7	VCC_RF ⁷	O	External LNA power supply
8	SPIS_CSN	I	Chip select pin for SPI slave
9	SPIS_MOSI	I	Master Out / Slave In. This pin is used to receive data in slave mode.
10	SPIS_CLK	I	Clock input pin for SPI slave
11	SPIS_MISO	O	Master In / Slave Out. This pin is used to transmit data in slave mode.
12	GND	—	Ground
13	RSV	—	Reserved; must be floating
14	GND	—	Ground
15	NC	—	No connection inside; leave floating
16	NC	—	No connection inside; leave floating
17	NC	—	No connection inside; leave floating
18	NC	—	No connection inside; leave floating
19	PVT_STAT	O	PVT status: active high; Outputs high when positioning and low when not positioning
20	RTK_STAT	O	RTK status: active high; Outputs high for RTK fixed solution and low for other positioning status or no positioning
21	ERR_STAT	O	Error status: active high; Outputs high when failing self-test and low when passing self-test

⁷ Not recommended to take VCC_RF as ANT_BIAS to feed the antenna. See section 3.2 for more details.

No.	Pin	I/O	Description
22	RSV	—	Reserved; must be floating
23	RSV	—	Reserved; must be floating
24	NC	—	No connection inside; leave floating
25	NC	—	No connection inside; leave floating
26	RXD2	I	COM2 input, LVTTL
27	TXD2	O	COM2 output, LVTTL
28	BIF	—	Built-in function; recommended to add a through-hole testing point and a 10 kΩ pull-up resistor; cannot connect ground or power supply or input/output data, but can be floating
29	BIF	—	Built-in function; recommended to add a through-hole testing point and a 10 kΩ pull-up resistor; cannot connect ground or power supply or input/output data, but can be floating
30	CAN_TXD	O	CAN output, LVTTL
31	CAN_RXD	I	CAN input, LVTTL
32	GND	—	Ground
33	VCC	I	Power supply
34	VCC	I	Power supply
35	NC	—	No connection inside; leave floating

No.	Pin	I/O	Description
36	V_BCKP	I	When the main power supply VCC is cut off, V_BCKP supplies power to RTC and relevant register. Level requirement: 2.0 V ~ 3.6 V, and the working current is less than 60 μ A at 25 °C. If you do not use the hot start function, connect V_BCKP to VCC. Do NOT connect it to ground or leave it floating.
37	GND	—	Ground
38	NC	—	No connection inside; leave floating
39	NC	—	No connection inside; leave floating
40	NC	—	No connection inside; leave floating
41	GND	—	Ground
42	TXD1	O	COM1 output, LVTTTL
43	RXD1	I	COM1 input, LVTTTL
44	SDA	I/O	I ² C data
45	SCL	I/O	I ² C clock
46	NC	—	No connection inside; leave floating
47	NC	—	No connection inside; leave floating
48	GND	—	Ground
49	RESET_N	I	System reset; active Low. The active time should be no less than 5 ms.
50	NC	—	No connection inside; leave floating
51	EVENT	I	Event mark input, with adjustable frequency and polarity
52	NC	—	No connection inside; leave floating
53	PPS	O	Pulse per second, with adjustable pulse width and polarity

No.	Pin	I/O	Description
54	NC	—	No connection inside; leave floating

2.2 Electrical Specifications

2.2.1 Absolute Maximum Ratings

Table 2-2 Absolute Maximum Ratings

Parameter	Symbol	Min.	Max.	Unit
Power Supply Voltage	VCC	-0.3	3.6	V
Input Voltage	V _{in}	-0.3	3.6	V
GNSS Antenna Signal Input	ANT_IN	-0.3	6	V
Antenna RF Input Power	ANT_IN input power		+10	dBm
External LNA Power Supply	VCC_RF	-0.3	3.6	V
VCC_RF Output Current	ICC_RF		100	mA
Storage Temperature	T _{stg}	-55	95	°C

2.2.2 Operating Conditions

Table 2-3 Operating Conditions

Parameter	Symbol	Min.	Typ.	Max.	Unit	Condition
Power Supply Voltage ⁸	VCC	3.0	3.3	3.6	V	
Maximum VCC Ripple	V _{rpp}	0		50	mV	
Working Current ⁹	I _{opr}		145	180	mA	VCC=3.3 V
VCC_RF Output Voltage	VCC_RF		VCC-0.1		V	
VCC_RF Output Current	ICC_RF			50	mA	
Operating Temperature	T _{opr}	-40		85	°C	
Power Consumption	P		480		mW	

2.2.3 IO Threshold

Table 2-4 IO Threshold

Parameter	Symbol	Min.	Typ.	Max.	Unit	Condition
Low Level Input Voltage	V _{in_low}	0		0.6	V	
High Level Input Voltage	V _{in_high}	VCC × 0.7		VCC + 0.2	V	
Low Level Output Voltage	V _{out_low}	0		0.45	V	I _{out} = 2 mA
High Level Output Voltage	V _{out_high}	VCC - 0.45		VCC	V	I _{out} = 2 mA

⁸ The voltage range of VCC (3.0 V ~ 3.6 V) has already included the ripple voltage.

⁹ Since the product has capacitors inside, inrush current occurs during power-on. You should evaluate in the actual environment in order to check the effect of the supply voltage drop caused by inrush current in the system.

2.2.4 Antenna Feature

Table 2-5 Antenna Feature

Parameter	Symbol	Min.	Typ.	Max.	Unit	Condition
Optimum Input Gain	G _{ant}	18	30	36	dB	

2.3 Dimensions

Table 2-6 Dimensions

Parameter	Min. (mm)	Typ. (mm)	Max. (mm)
A	21.80	22.00	22.50
B	16.80	17.00	17.50
C	2.40	2.60	2.80
D	3.75	3.85	3.95
E	0.95	1.05	1.15
F	1.80	1.90	2.00
G	1.00	1.10	1.20
H	0.70	0.80	0.90
K	1.40	1.50	1.60
M	3.55	3.65	3.75
N	3.15	3.25	3.35
P	2.00	2.10	2.20
R	1.00	1.10	1.20
X	0.72	0.82	0.92

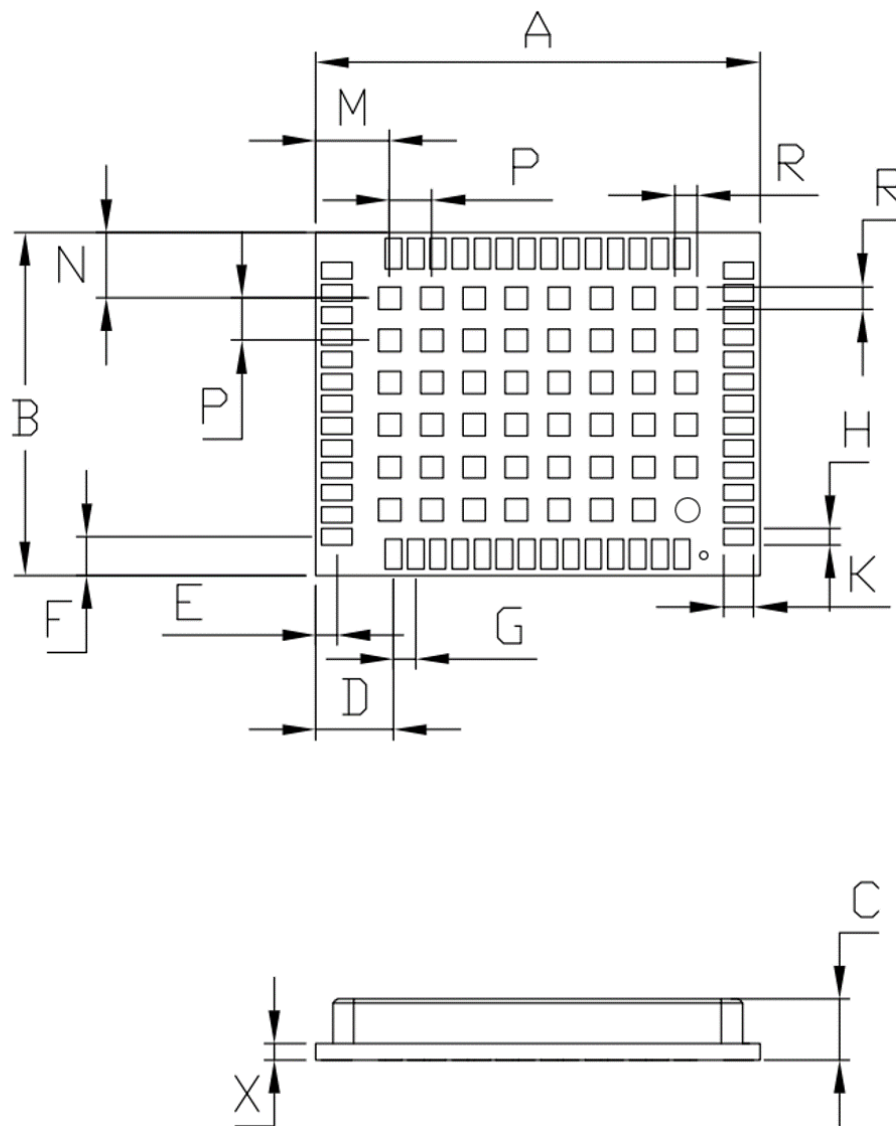


Figure 2-2 UM981 Mechanical Dimensions

3 Hardware Design

3.1 Recommended Minimal Design

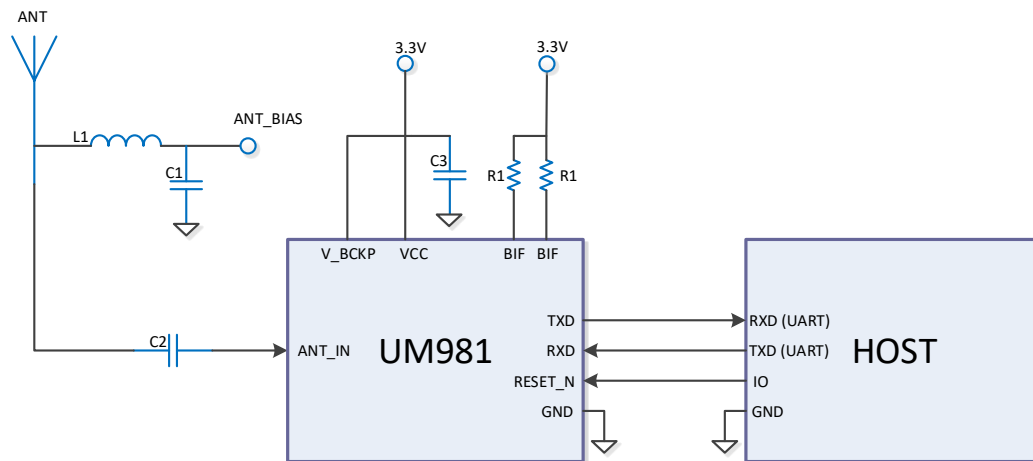


Figure 3-1 Recommended Minimal Design

L1: 68 nH RF inductor in 0603 package is recommended

C1: 100 nF + 100 pF capacitors connected in parallel is recommended

C2: 100 pF capacitor is recommended

C3: $N \times 10 \mu\text{F} + 1 \times 100 \text{ nF}$ capacitors connected in parallel is recommended, and the total inductance should be no less than $30 \mu\text{F}$

R1: 10 k Ω resistor is recommended

3.2 Antenna Feed Design

UM981 just supports feeding the antenna from the outside of the module rather than from the inside. It is recommended to use devices with high power and that can withstand high voltage. Gas discharge tube, varistor, TVS tube and other high-power protective devices may also be used in the power supply circuit to further protect the module from lightning strike and surge.

! If the antenna feed supply ANT_BIAS and the module's main supply VCC use the same power rail, the ESD, surge and overvoltage from the antenna will have an effect on VCC, which may cause damage to the module. Therefore, it is recommended to design an independent power rail for the ANT_BIAS to reduce the possibility of module damage.

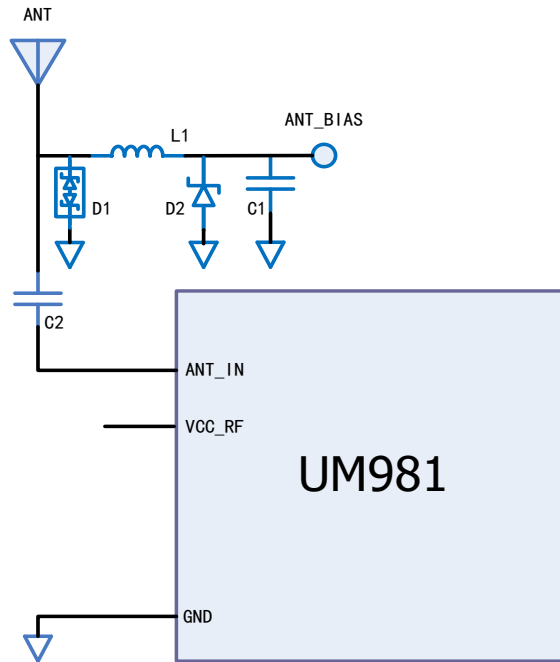


Figure 3-2 UM981 External Antenna Feed Reference Circuit

Notes:

1. L1: feed inductor, 68 nH RF inductor in 0603 package is recommended
2. C1: decoupling capacitor, recommended to connect two capacitors of 100 nF/100 pF in parallel
3. C2: DC blocking capacitor, recommended 100 pF capacitor

4. It is not recommended to take VCC_RF as ANT_BIAS to feed the antenna (VCC_RF is not optimized for anti-lightning strike, anti-surge and over current protection due to the compact size of the module)
5. D1: ESD diode, choose the ESD protection device that supports high frequency signals (above 2000 MHz)
6. D2: TVS diode, choose a TVS diode with appropriate clamping specification according to the requirement of feed voltage and the antenna withstand voltage

3.3 Power-on and Power-off

VCC

- The VCC initial level when power-on should be less than 0.4 V.
- The VCC ramp when power-on should be monotonic, without plateaus.
- The voltages of undershoot and ringing should be within 5% VCC.
- Power-on time interval: The time interval between the power-off ($VCC < 0.4\text{ V}$) to the next power-on must be larger than 500 ms.

V_BCKP

- The V_BCKP initial level when power-on should be less than 0.4 V.
- The V_BCKP ramp when power-on should be monotonic, without plateaus.
- The voltages of undershoot and ringing should be within 5% V_BCKP.
- Power-on time interval: The time interval between the power-off ($V_BCKP < 0.4\text{ V}$) to the next power-on must be larger than 500 ms.

3.4 Grounding and Heat Dissipation

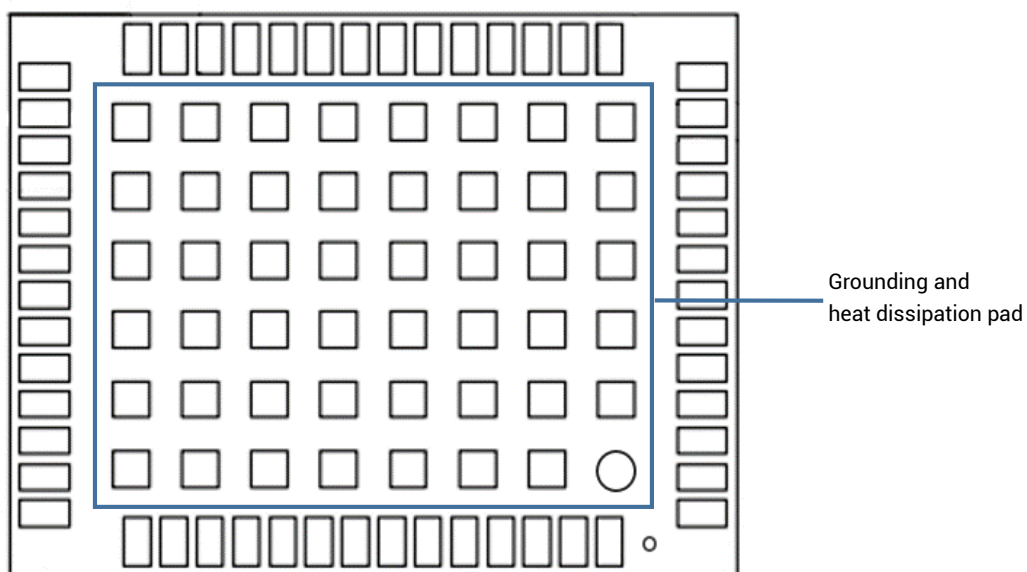


Figure 3-3 Grounding and Heat Dissipation Pad (Bottom View)

The 48 pads in the rectangle area are used for grounding and heat dissipation. In the PCB design, the pads should be connected to a large-size ground to strengthen the heat dissipation.

3.5 Recommended Footprint on the PCB

The dimensions of UM981's footprint on the PCB is recommended to be the same as that of the module's pads, as shown in **Figure 3-4 Recommended Footprint**. For more information about the module's dimensions, see **2.3 Dimensions**.

- ☞ For the convenience of hardware testing and debugging, proper test points can be added for the functional pins of the module.
- ☞ The dimensions of PCB pads can be optimized according to the specific production process to ensure manufacturability and reliability.

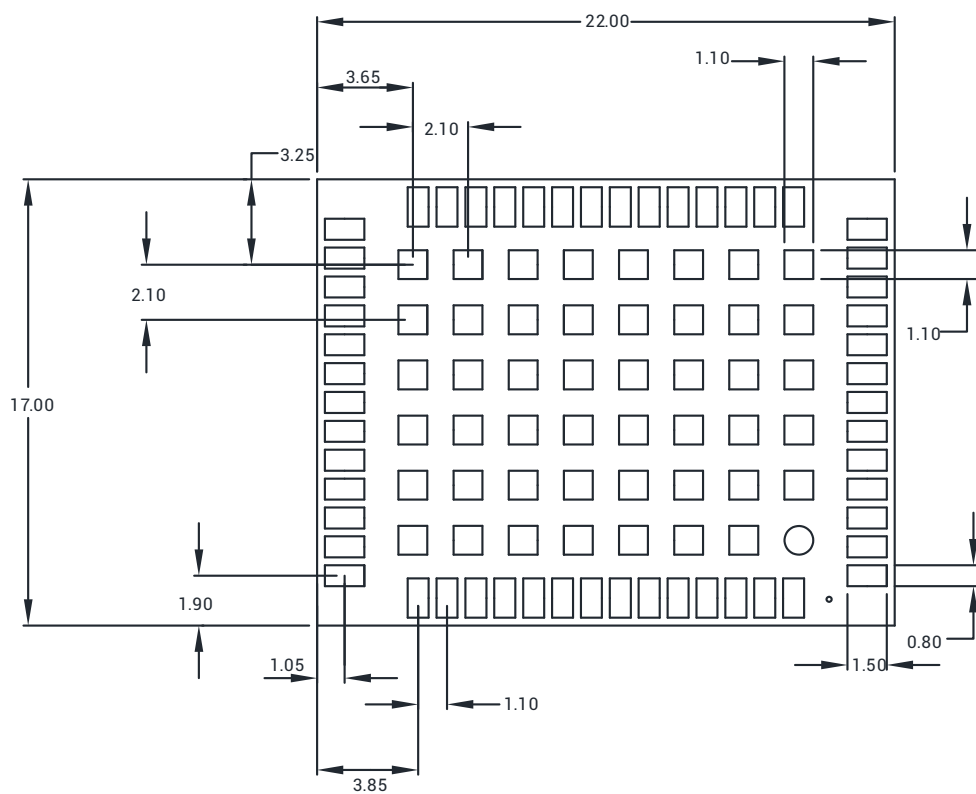


Figure 3-4 Recommended Footprint (Unit: mm)

4 Production Requirements

Recommended soldering temperature curve is as follows:

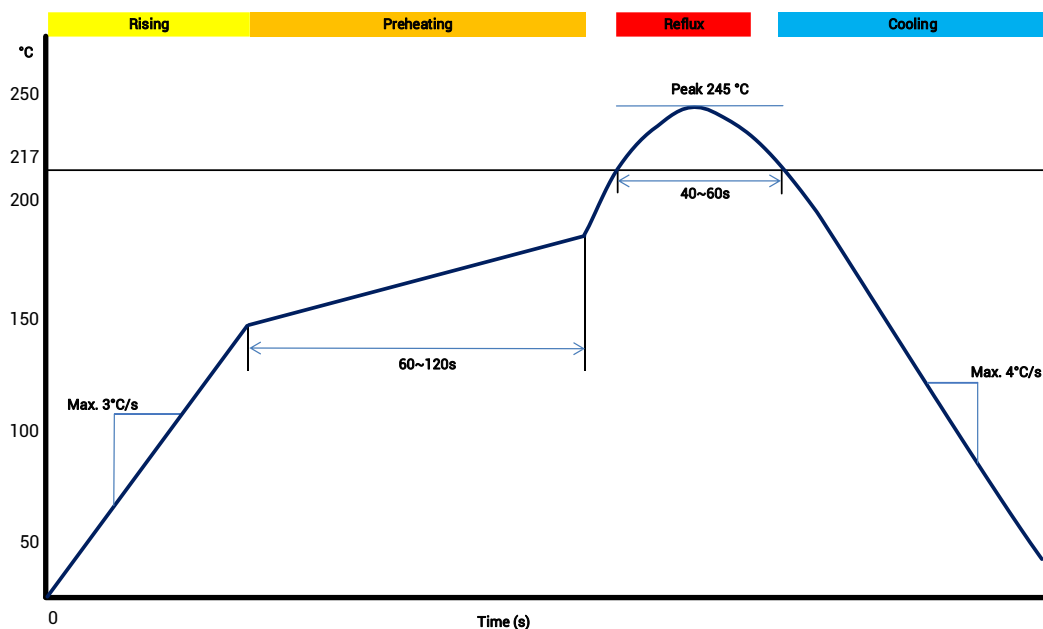


Figure 4-1 Soldering Temperature (Lead-free)

Temperature Rising Stage

- Rising slope: Max. 3 °C/s
- Rising temperature range: 50 °C ~ 150 °C

Preheating Stage

- Preheating time: 60s ~ 120 s
- Preheating temperature range: 150 °C ~ 180 °C

Reflux Stage

- Over melting temperature (217 °C) time: 40s ~ 60 s
- Peak temperature for soldering: no higher than 245 °C


Cooling Stage

- Cooling slope: Max. 4 °C / s



- In order to prevent falling off during soldering of the module, do not solder it on the back of the board during design, and it is not recommended to go through soldering cycle twice.

- The setting of soldering temperature depends on many factors of the factory, such as board type, solder paste type, solder paste thickness etc. Please also refer to the relevant IPC standards and indicators of solder paste.
- Since the lead soldering temperature is relatively low, if using this method, please give priority to other components on the board.
- The apertures in the stencil need to meet the customer's own design requirements and inspection specifications. The thickness of the stencil is recommended to be 0.15 mm (not less than 0.12 mm).

 The design of the stencil can be optimized according to the specific production process to ensure manufacturability and reliability.

5 Packaging

5.1 Label Description



Figure 5-1 Label Description

5.2 Product Packaging

The UM981 module uses carrier tape and reel (suitable for mainstream surface mount devices), packaged in vacuum-sealed aluminum foil antistatic bags, with a desiccant inside to prevent moisture. When using reflow soldering process to solder modules, please strictly comply with IPC standard to conduct temperature and humidity control on the modules. As packaging materials such as the carrier tape can only withstand the temperature of 55 degrees Celsius, modules shall be removed from the package during baking.

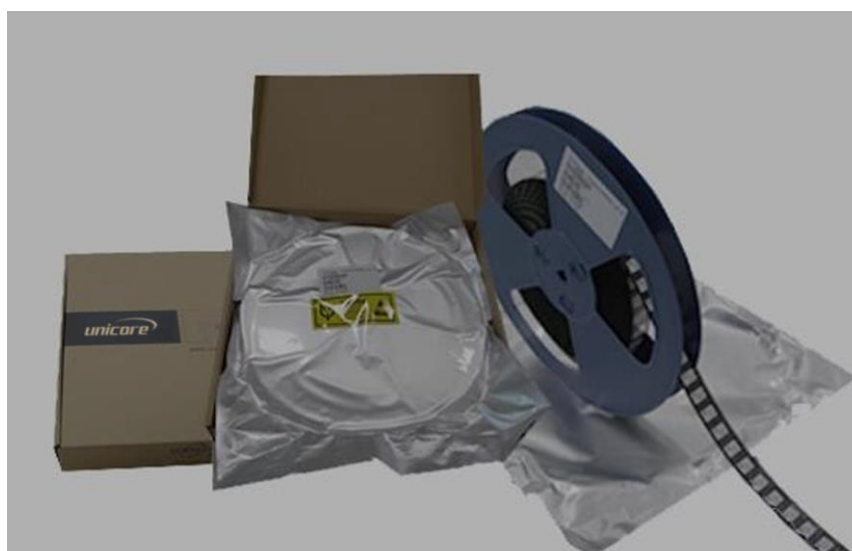
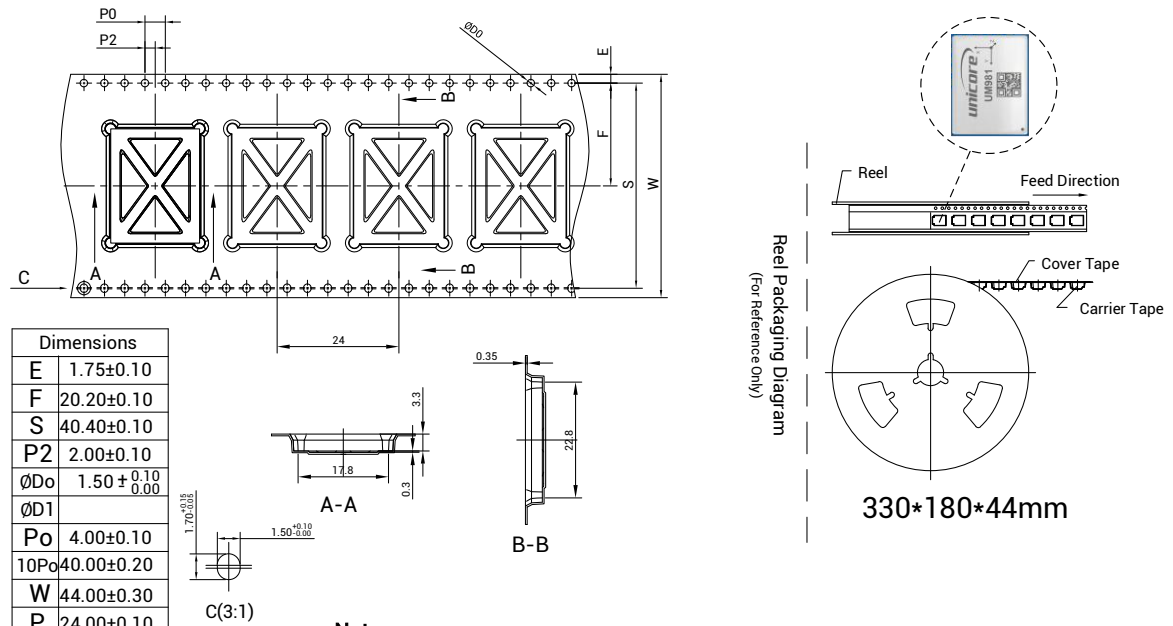


Figure 5-2 UM981 Package



Note:

1. The cumulative tolerance of 10 side holes should not exceed ± 0.2 mm.
2. Material of the tape: Black antistatic PS (surface impedance 10^5 - 10^{11}) (surface static voltage <100 V), thickness: 0.35 mm.
3. Total length of the 13-inch reel package: 6.816 m (Length of the first part of empty packets: 0.408 m, length of packets containing modules: 6 m, length of the last part of empty packets: 0.408 m).
4. Total number of packets in the 13-inch reel package: 284 (Number of the first part of empty packets: 17; actual number of modules in the packets: 250; number of the last part of empty packets: 17).
5. All dimension designs are in accordance with EIA-481-C-2003.
6. The maximum bending degree of the carrier tape within the length of 250 mm should not exceed 1 mm (see the figure below).

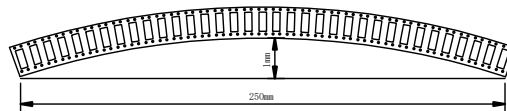


Figure 5-3 UM981 Reel Package Diagram

Table 5-1 Package Description

Item	Description
Module Number	250 pieces/reel
Reel Size	Tray: 13" External diameter: 330 ± 2 mm, Internal diameter: 180 ± 2 mm, Width: 44.5 ± 0.5 mm Thickness: 2.0 ± 0.2 mm

Item	Description
Carrier Tape	Space between (center-to-center distance): 24 mm

Before surface mounting, make sure that the color of the 30% circle on the HUMIDITY INDICATOR is blue (see Figure 5-4). If the color of the 20% circle is pink and the color of the 30% circle is lavender (see Figure 5-5), you must bake the module until it turns to blue. The UM981 is rated at MSL level 3. Please refer to the IPC/JEDEC J-STD-033 standards for the package and operation requirements. You may also access to the website www.jedec.org to get more information.

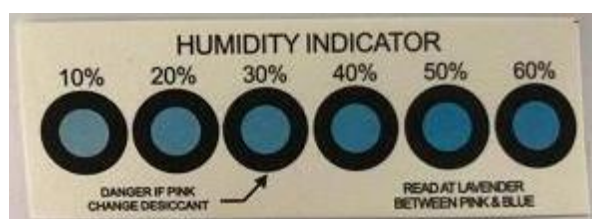


Figure 5-4 Normal Humidity Indication

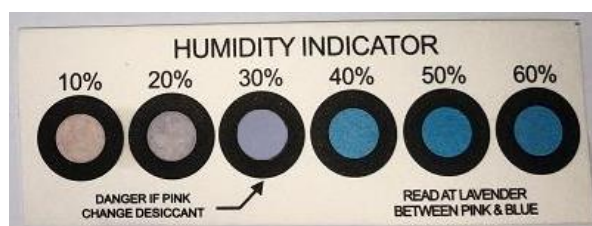


Figure 5-5 Abnormal Humidity Indication

The shelf life of the UM981 module packaged in vacuum-sealed aluminum foil antistatic bags is one year.

和芯星通科技（北京）有限公司

Unicore Communications, Inc.

北京市海淀区丰贤东路 7 号北斗星通大厦三层
F3, No.7, Fengxian East Road, Haidian, Beijing, P.R.China,
100094

www.unicore.com

Phone: 86-10-69939800

Fax: 86-10-69939888

info@unicorecomm.com



www.unicore.com